

# Embassy Tea House

195 – 205 Union St, London SE1 OLN

Rental Options: Cat – A: **£15,200 pcm**  
Fully Fitted: **£19,500 pcm**  
Fully Managed: **£43,999 pcm**



Iconic former warehouse less than 5-mins walk from Southwark underground. The building has been sympathetically refurbished to retain its warehouse spirit, while delivering the highest standard of modern office amenities and services. Located in the heart of London's thriving Southbank district, the area offers a wide variety of bars, restaurants, coffee shops and galleries as well as London's famous Borough market.



Embassy Tea House combines the true spirit of a warehouse working environment with a premium Managed Office service. Excellent natural light, iconic crittall windows and historic features make for an immersive working environment. The ground floor is entirely made over to meeting rooms and break-out areas, while each of the upper floors is provided with your company's choice of furniture, fitout and dedicated IT services

## Key Facts

Cat – A: **£15,200 pcm**  
Fully Fitted: **£19,500 pcm**  
Fully Managed: **£43,999 pcm**

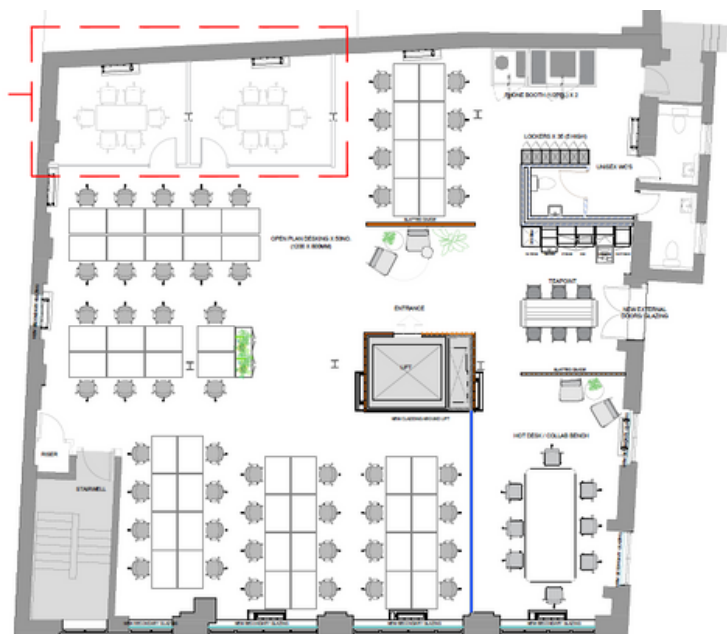
UNIT SIZE: **3,461 sqft**  
DESKS: **40-70**  
RENT: **From £15,200 pcm**

BUILDING SIZE: **18,617 sqft**  
BUILDING FLOORS: **5**  
UNIT: **1<sup>ST</sup> FLOOR**

## Highlights of your New Office:

Own private unit

- Workstations plus kitchen, meeting room and informal break out areas
- Personalised fit-out and furniture with your choice of configuration
- Comfort heating and cooling
- Excellent natural light
- Showers and bike storage
- Reception service



## 50 PERSON OFFICE

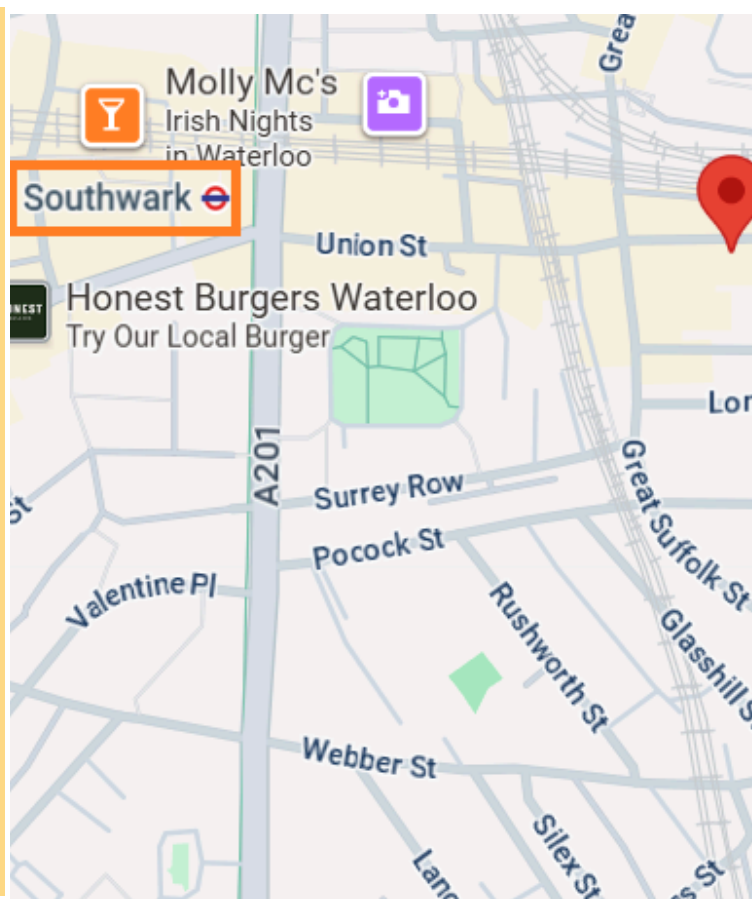
OTHER LAYOUTS AVAILABLE

Tailor-made, turn-key office solution giving you your own private suite, with your choice of layout, furniture and dedicated IT services.

## What's included in the price

### Service Cat-A Fitted Managed

Rent	✓	✓	✓
Rates			✓
Service Charge			✓
Furniture & Fitout		✓	✓
Internet Office Ready			✓
Utilities			✓
Building Reception	✓	✓	✓
Customer App	✓	✓	✓
Customer Services Manager			✓
24/7 Helpdesk			✓
Cleaning			✓
Consumer Supplies			✓
Tech Support			✓
Repairs & Maintenance			✓
Health & Safety			✓
Misc Items			✓
Coffee Machine			✓
<b>Rent/ pcm</b>	<b>£15,200pcm</b>	<b>£19,500pcm</b>	<b>£43,999pcm</b>



**Embassy Tea House**  
195 – 205 Union St, London SE1  
OLN

TEL: 020 7930 5724

[HELLO@EMBASSYTEAHOUSE.ME](mailto:HELLO@EMBASSYTEAHOUSE.ME)